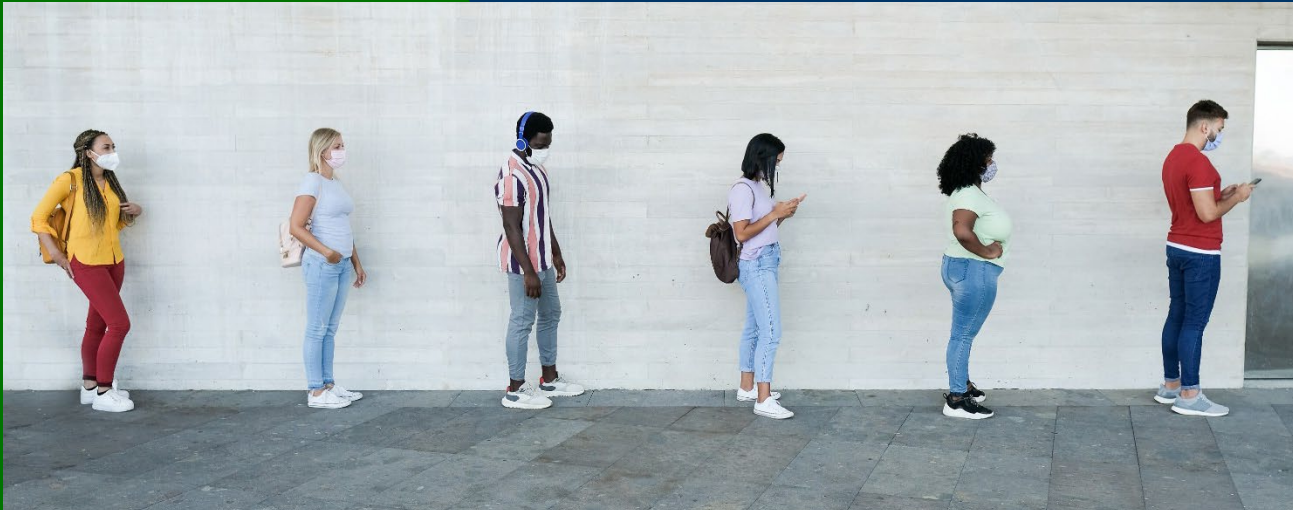


# COVID-19 and K-12 Schools



*Departments of Health & Senior Services  
and Elementary & Secondary Education*

December 1, 2020



## ▶ COVID-19 in Missouri—data takeaways 11/30

- Missouri's new case rate has dropped over the past two weeks, in part due to fewer tests done around the Thanksgiving holiday
- Still, the new case rate remains at critically high levels and could easily continue rising without spread-limiting behaviors
  - Transmission (measured by  $R_e$ ) remains critically high ( $>1.2$  in several regions)
  - Hospitals remain stretched as they care for high numbers of COVID-19 patients
- We are watching the data carefully over the next two weeks to understand the true trends and the effects of holiday travel and gatherings

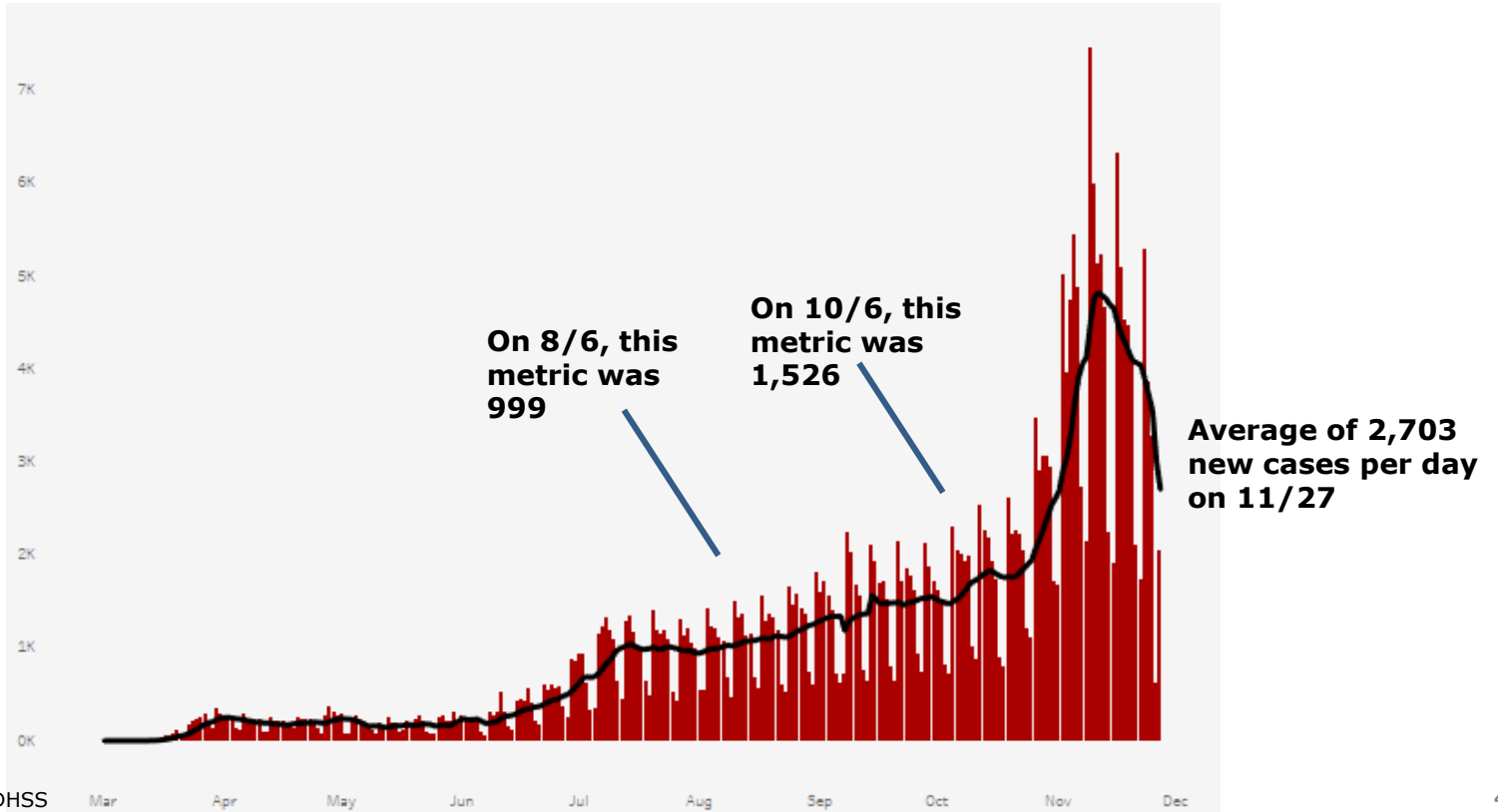
# Public executive dashboard – 11/30

Data available at ShowMeStrong.mo.gov

<b>Cases</b>	New Cases in the Past 7 Days <b>18,924</b>	Average of <b>2,703</b> per day  308 cases per 100K residents	The number of total people with a positive PCR COVID-19 test in the past week.
<b>Deaths</b>	New Deaths in the Past 7 Days <b>53</b>	Average of <b>8</b> per day  0.9 deaths per 100K residents	The number of Missourians who died from COVID-19 in the past week.
<b>Tests</b>	New Tests in the Past 7 Days <b>100,677</b>	Average of <b>14,382</b> per day  1,640 tests per 100K residents	The number of total PCR tests in the past week. Testing helps identify new cases so we can take actions to slow the spread of the virus.
<b>Positivity Rate</b>	Positivity Rate over the Past 7 Days (CDC method) <b>20.0%</b>		Positivity rate can be calculated multiple ways. The CDC method uses the number of positive PCR tests divided by the total number of PCR tests. <b>See FAQ for more details (link below).</b>
<b>Hospitalizations</b>	COVID-19 Patients in the Hospital <b>2,498</b> (as of 11/27/2020)	<b>636</b> in the ICU  <b>339</b> on ventilators	The number of Missourians in the hospital who are confirmed or suspected to have COVID-19. This number is important for assessing the overall strain on the Missouri health care system. <b>See note below for more context.</b>

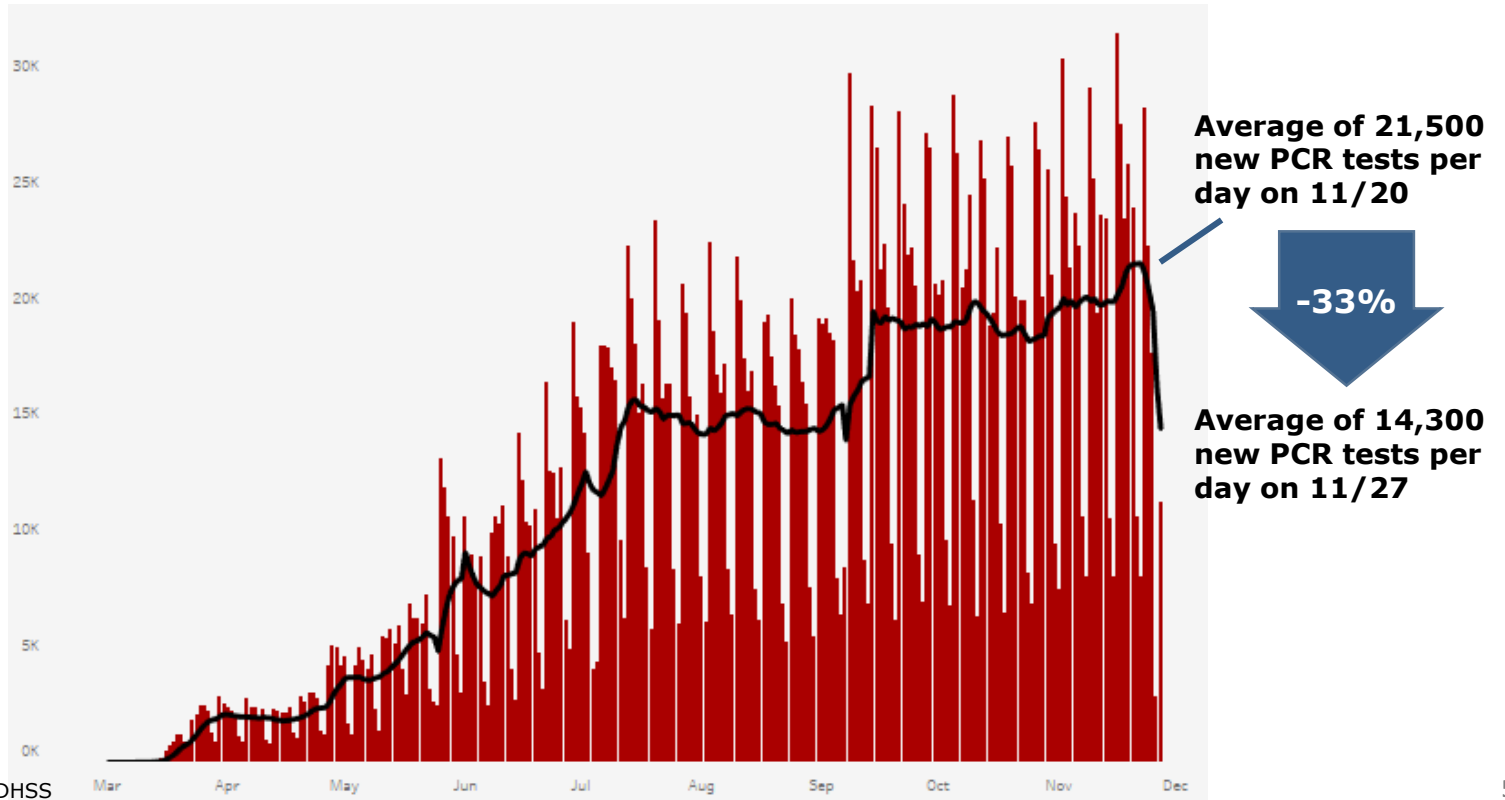
► Missouri's new case rate has dipped but remains high

**New cases per day since March (line represents 7-day average)**



- ▶ Tests have also declined in the past week due to the holiday

## New PCR tests per day since March (line represents 7-day average)



- ▶ Positivity rate is down slightly from its 25% peak this month

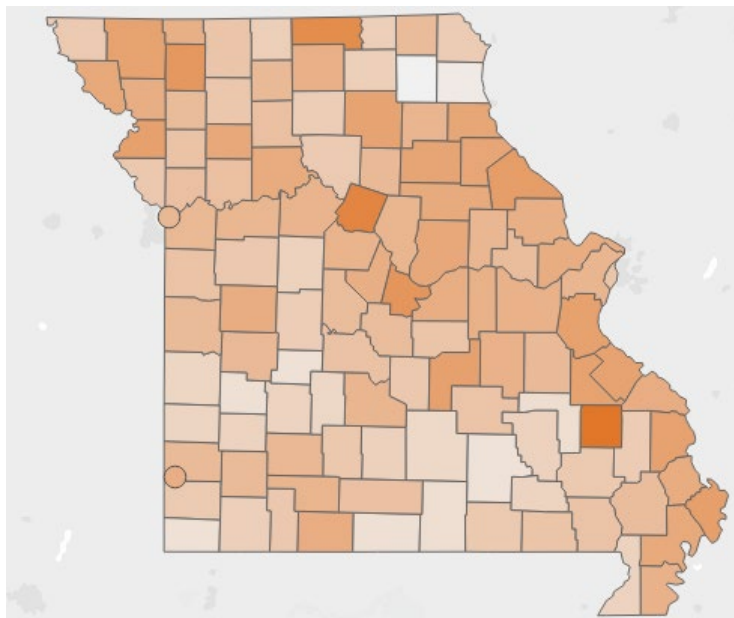
### 7-day PCR positivity rate (CDC method) over time



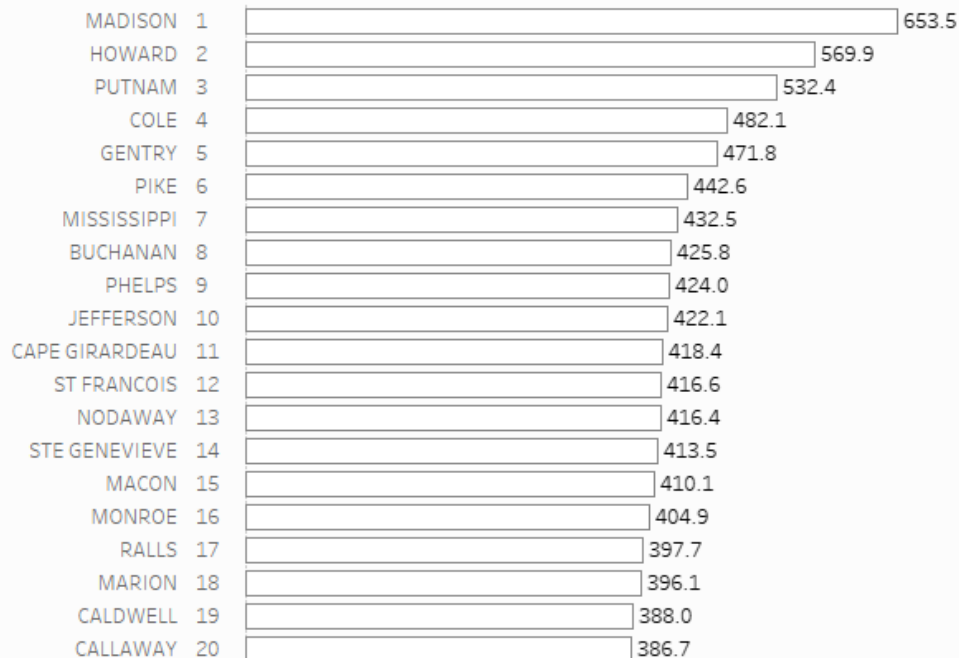
## ► Case rates in many counties are down but still high

### 7-day new cases per 100k

(11/21 through 11/27)



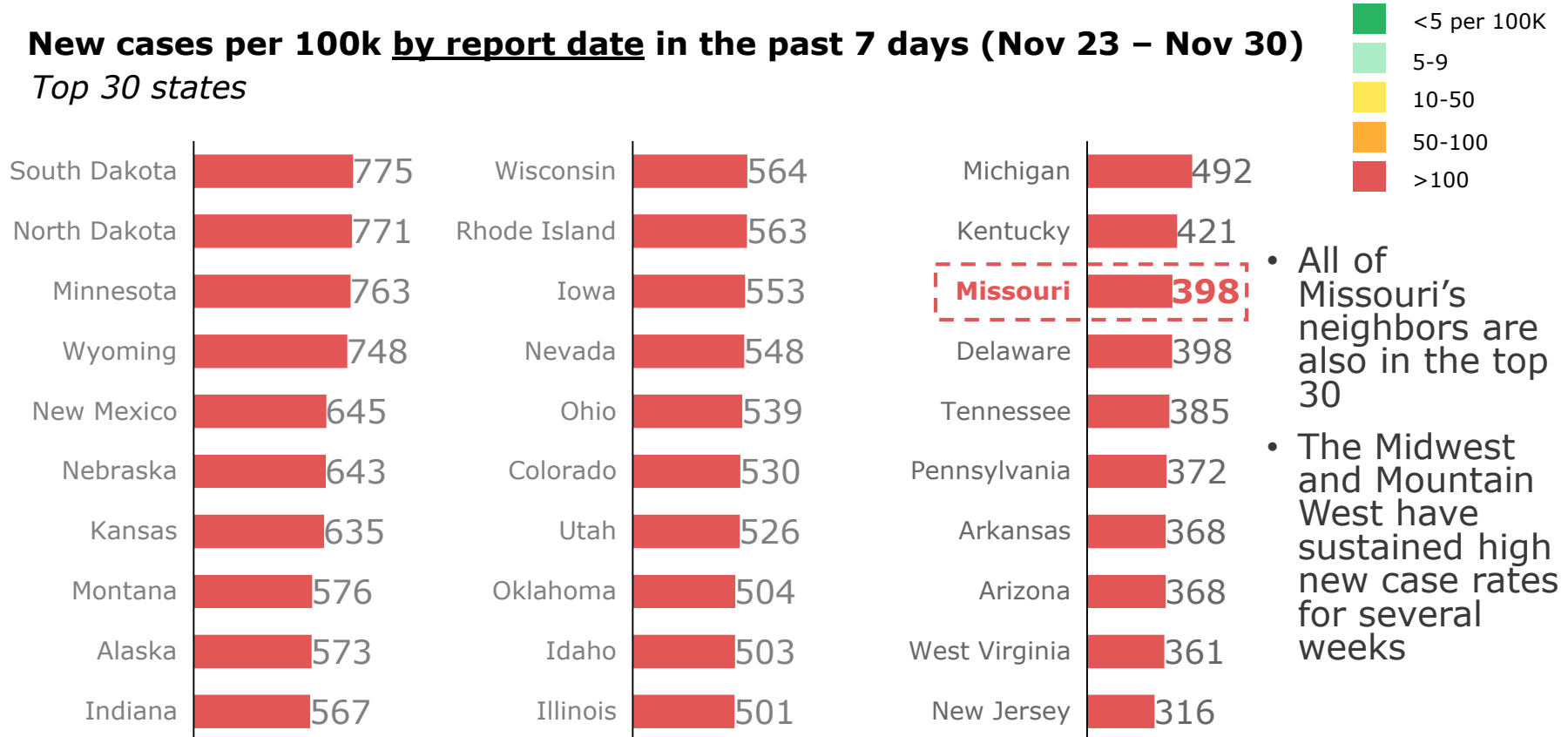
### Top 20 counties by new case rate per



# ▶ Missouri is currently #23 in new cases per capita

## New cases per 100k by report date in the past 7 days (Nov 23 – Nov 30)

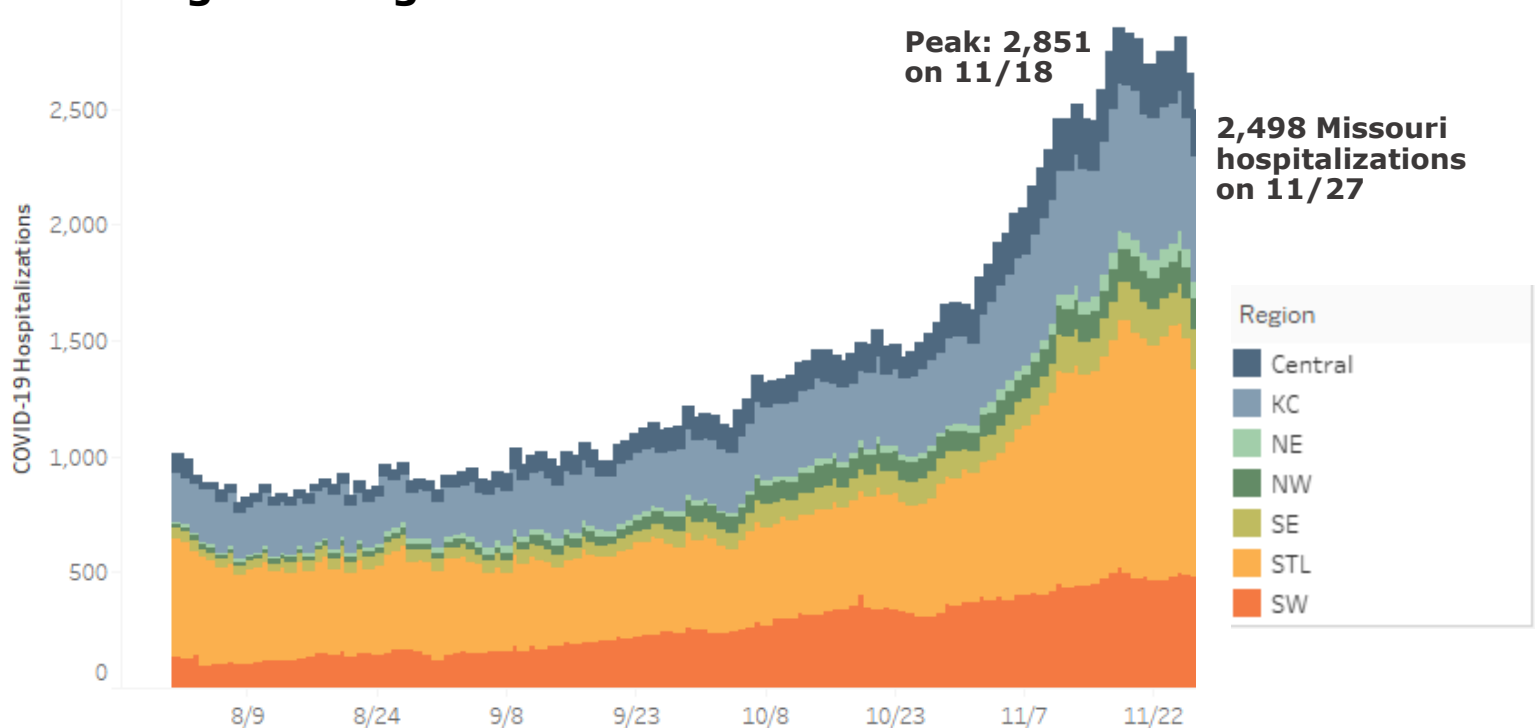
### Top 30 states





► Hospitalizations are down slightly from their recent peak

**Statewide suspected and confirmed COVID-19 hospitalizations, data through from Aug 1 through Nov 27**



# SARS-CoV-2, Children, and Schools

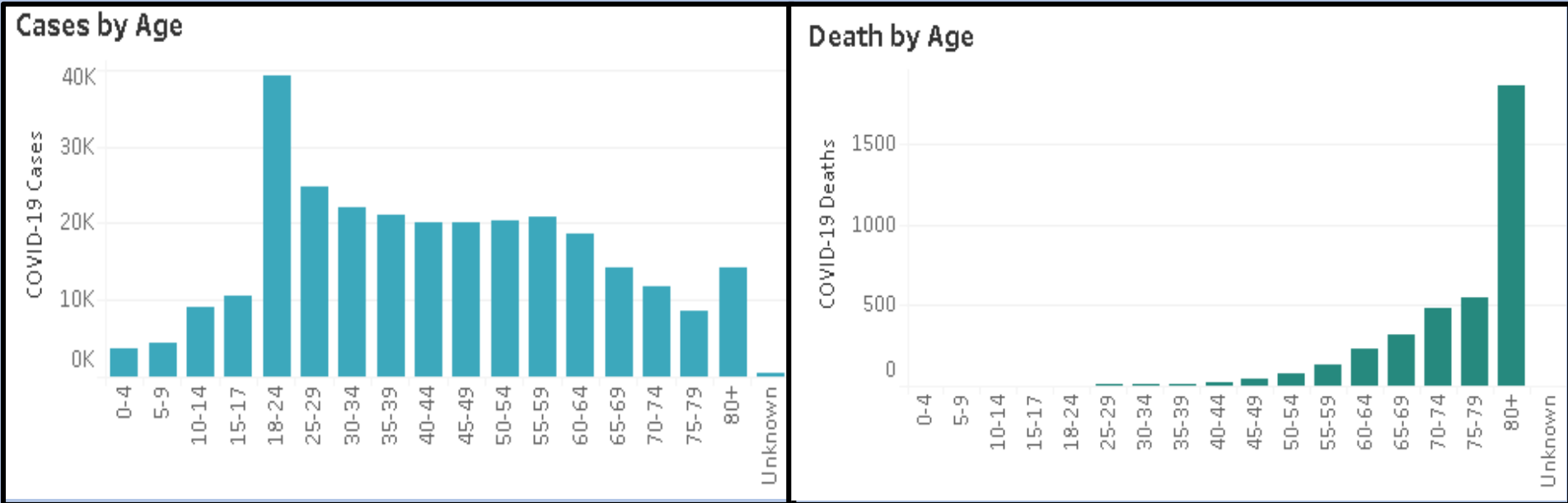
Rachel C. Orscheln, MD

Associate Professor of Pediatrics

Division of Pediatric Infectious Diseases

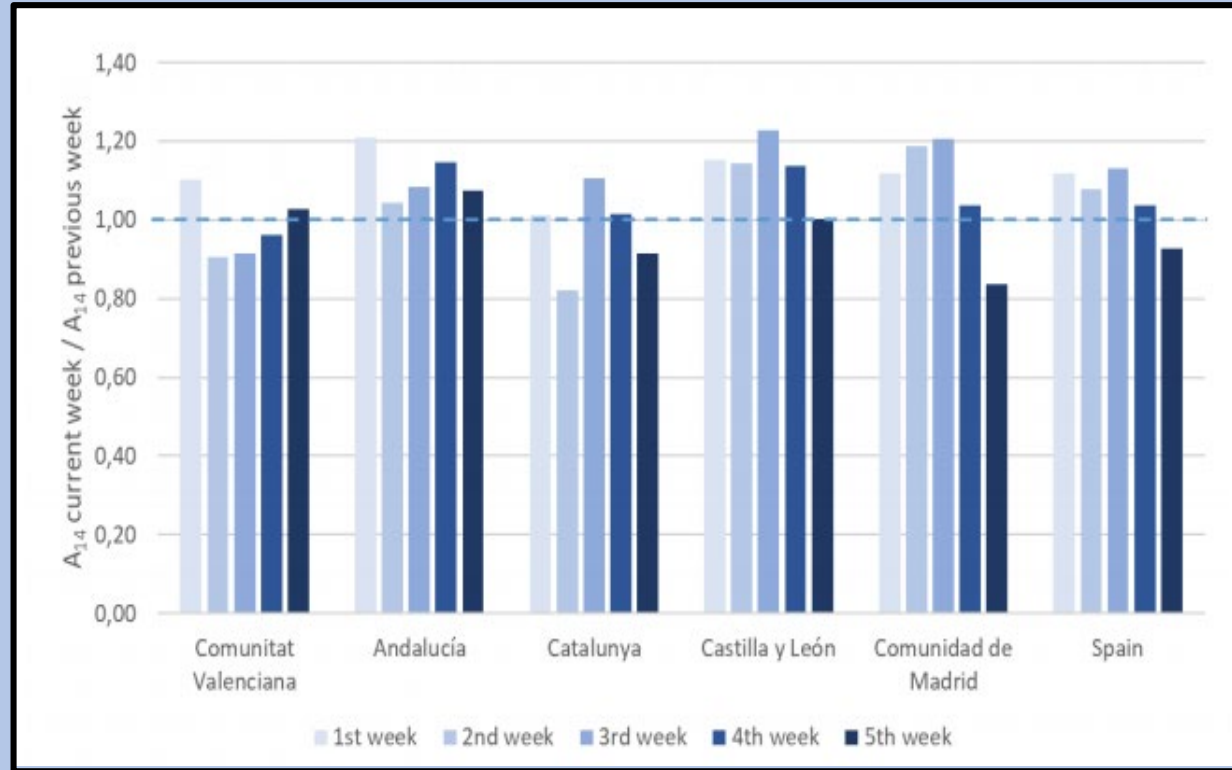
Washington University

# Missouri COVID-19 Cases by Age



# Community Transmission with School Reopening

- No change in community transmission associated with school reopening



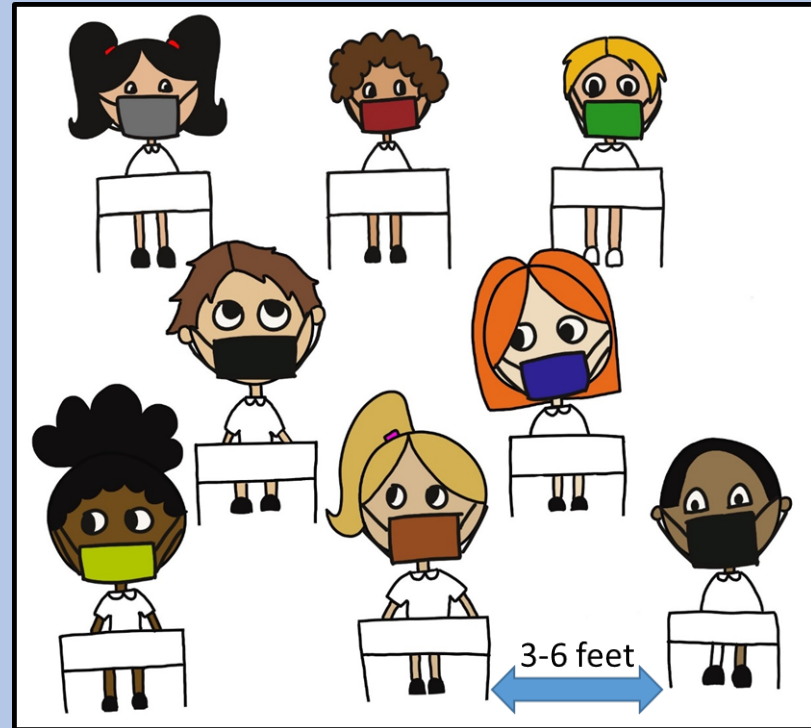
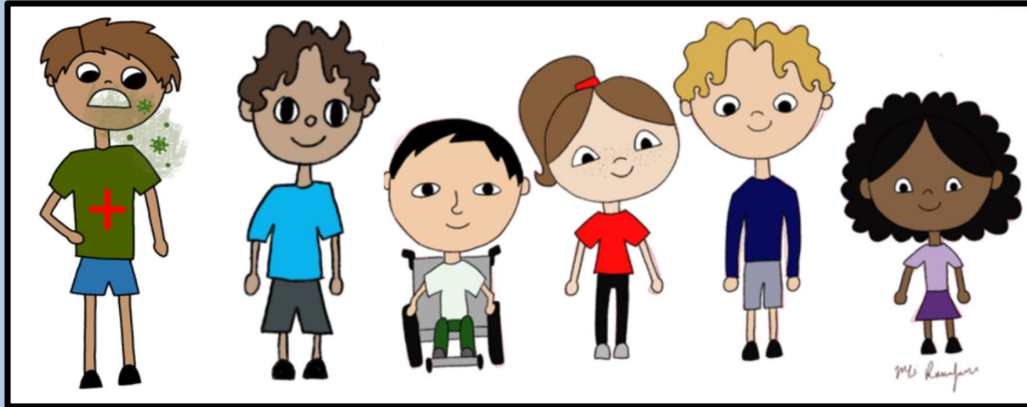
# COVID-19 and Schools

- Less than 1% of close contacts develop infection

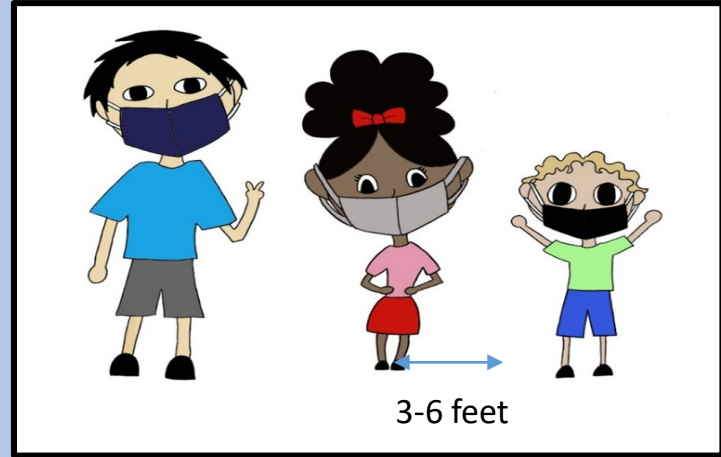
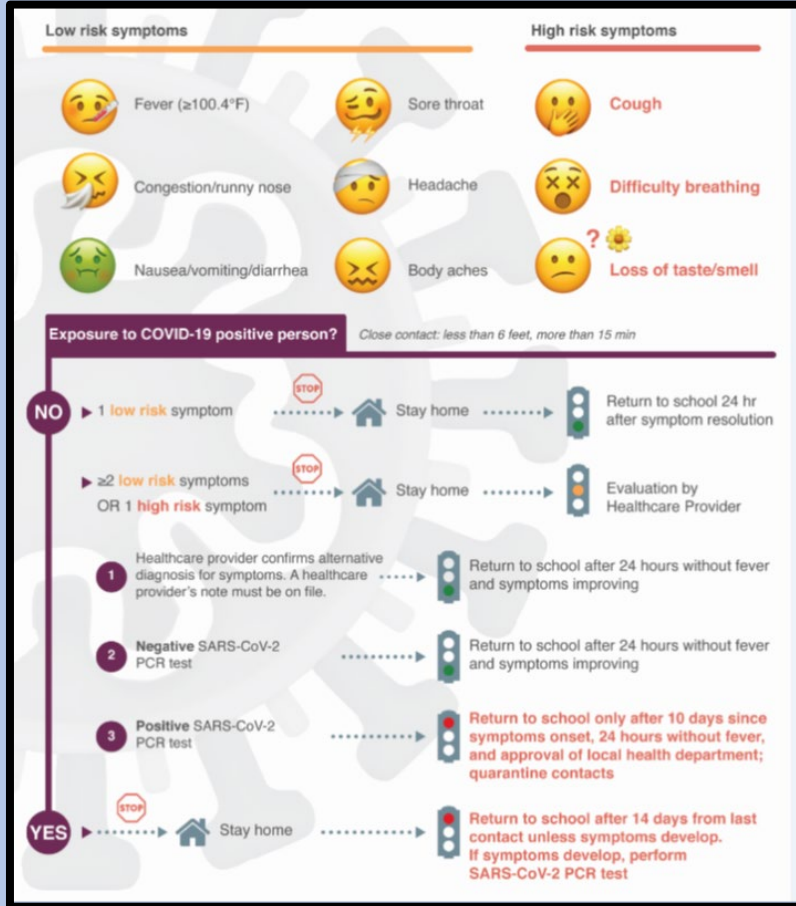


# COVID-19 and Schools

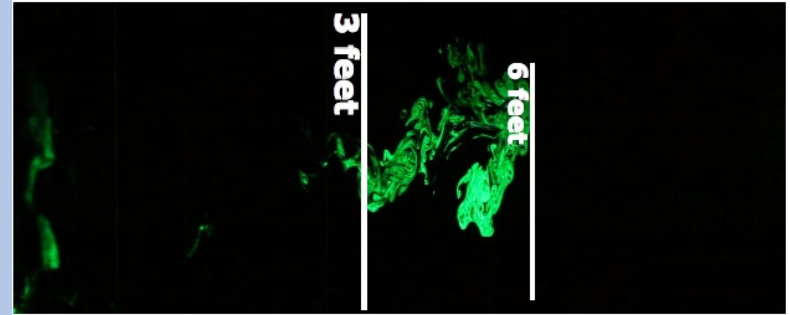
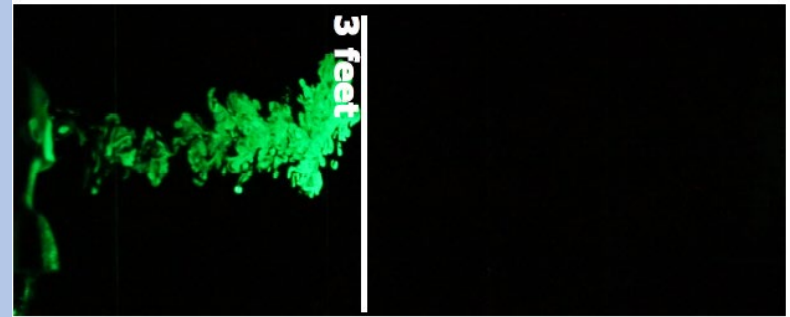
- Study by St. Louis area pediatricians (WUPAARC) suggests children in school are at lower risk for infection than those in the community



# Mitigation Strategies in Schools are Effective



# Respiratory Droplet Travel



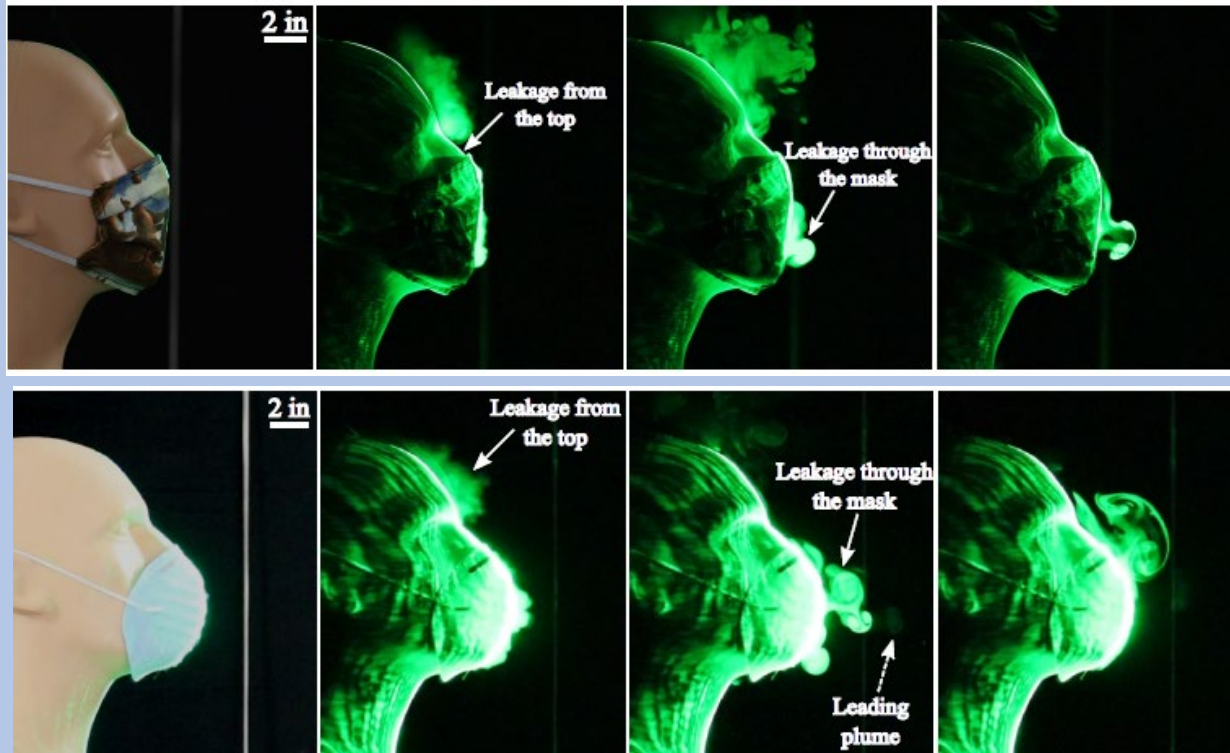
Smoke Generator

Face Mask

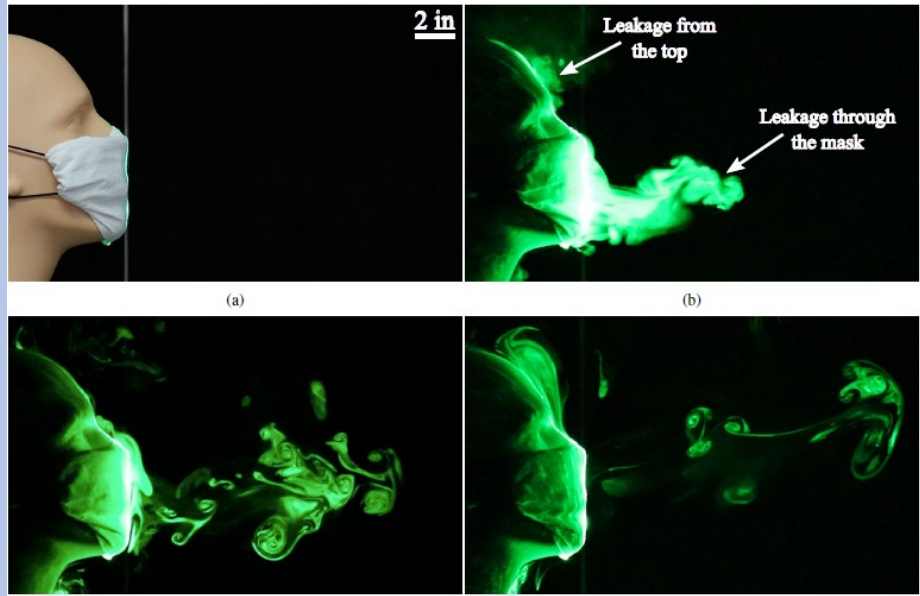
Manual Pump



# Cloth Face Mask and N95 Respirators



# Community Based Face Masks



Mask type	Material	Threads per inch	Average jet distance
Uncovered	—	—	~ 8 feet
Bandana	Elastic T-shirt material	85	~3 feet 7 inches
Folded handkerchief	Cotton	55	1 foot 3 inches
Stitched mask	Quilting cotton	70	2.5 inches
Commercial mask <sup>a</sup>	Unknown	Randomly assorted fibers	8 inches

<sup>a</sup> CVS Cone Face Mask

# Mask Wearing Reminders (from CDC)

## DO choose masks that



Have two or more layers of washable, breathable fabric



Completely cover your nose and mouth



Fit snugly against the sides of your face and don't have gaps

## DO NOT choose masks that



Are made of fabric that makes it hard to breathe, for example, vinyl



Have exhalation valves or vents, which allow virus particles to escape



Are intended for healthcare workers, including N95 respirators or surgical masks

## Caution: Gaiters & Face Shields

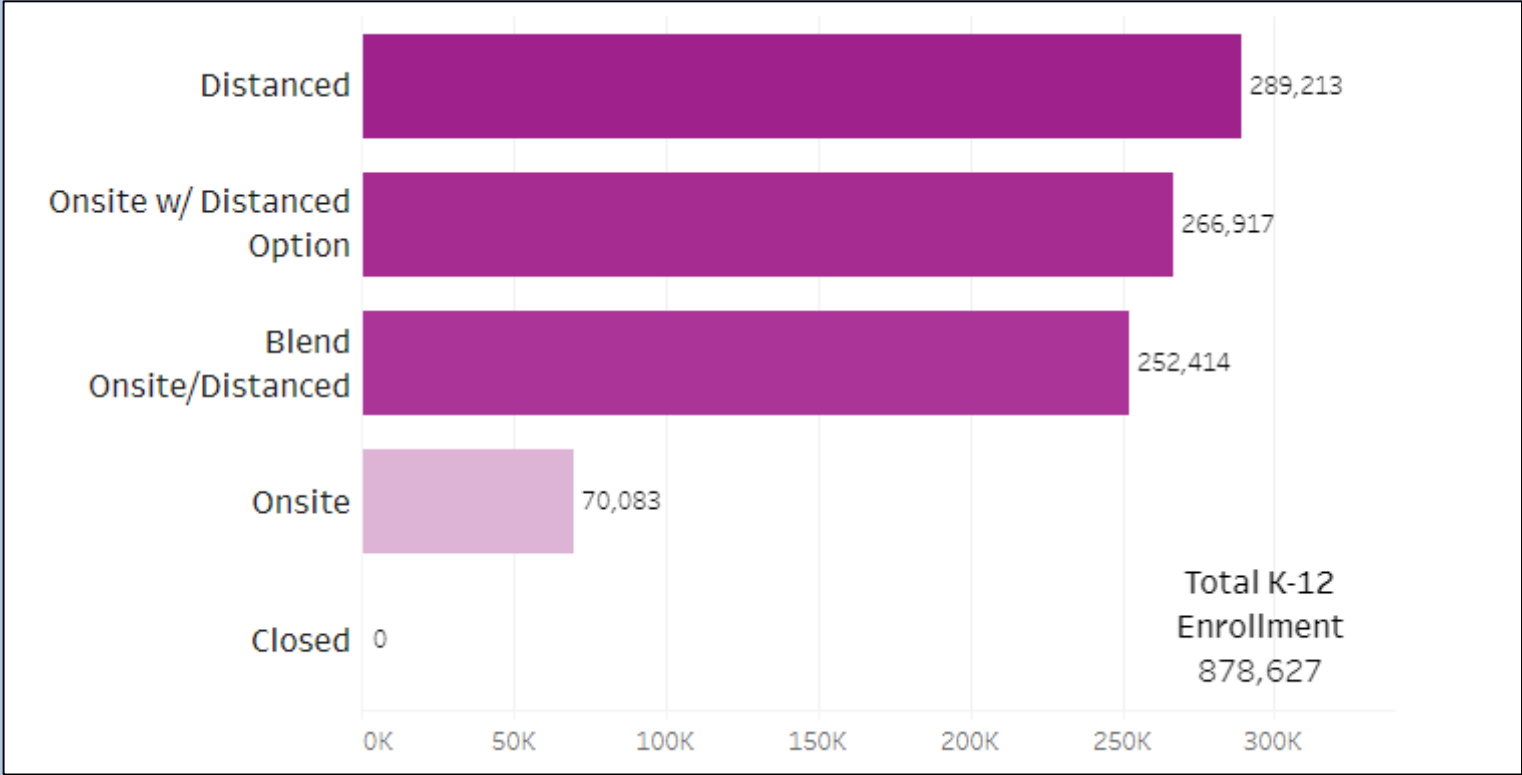


Evaluation is on-going but effectiveness is unknown at this time

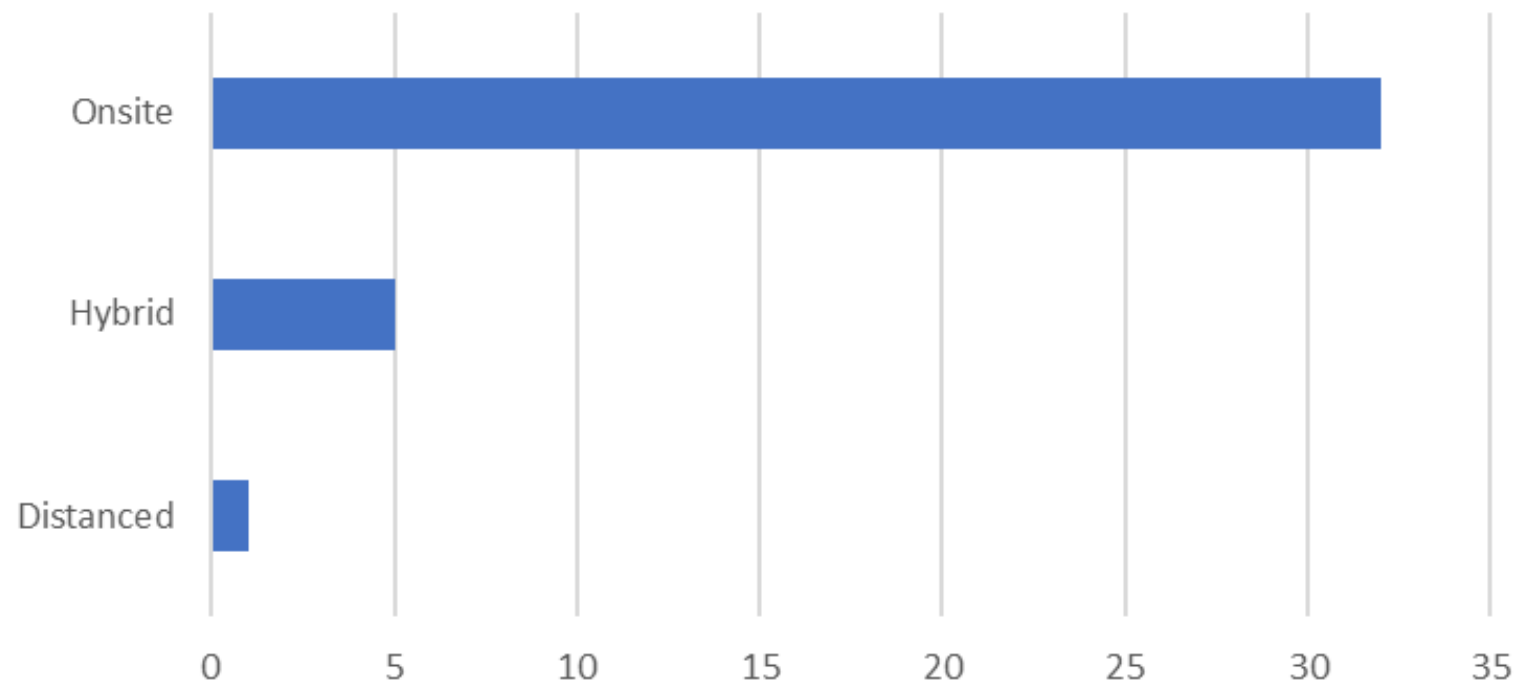


Evaluation is on-going but effectiveness is unknown at this time

# Current Instructional Models in Missouri



## Instructional Model for Independent Schools (n=38)

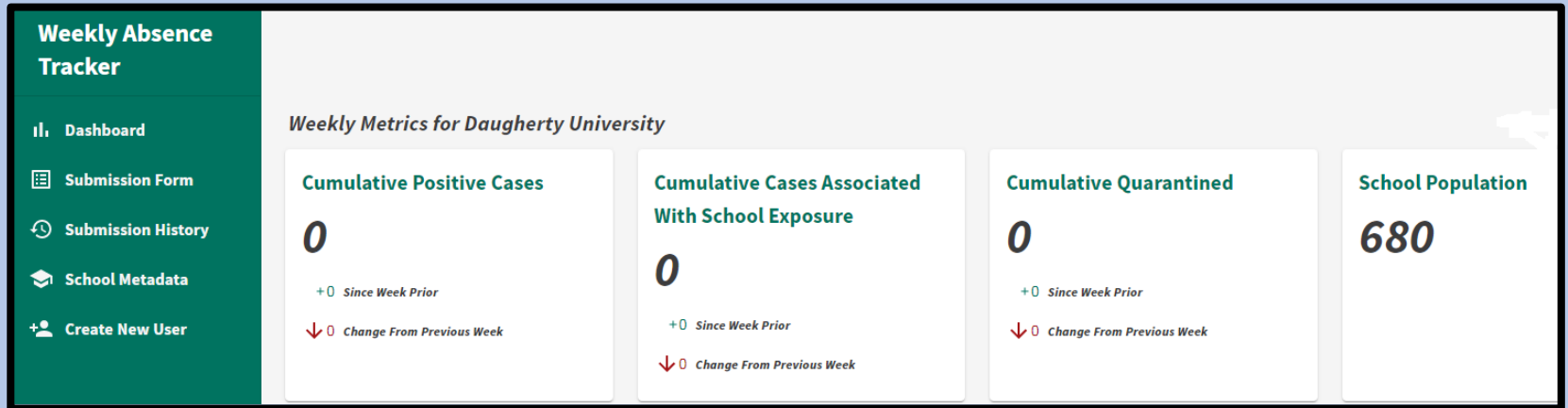




# Missouri CDC Collaboration



- Prospective Data Collection in Schools



- Prospective Observational Study of Mitigation Strategies in Schools

- Some LPHAs making changes to approach/model
- Requirement for LPHA to begin school-aged positive case investigation within 24 hours removed from order
  - ❑ Schools may continue to exclude close contacts from the school setting
  - ❑ May recommend self-quarantine outside of school, but schools are not able/required to enforce that

- Data shows limited transmission in schools with mask mandates & other mitigation strategies, so an exception was made for in-person learning only
- Ongoing questions:
  - ❑ Contact tracing protocol for schools
  - ❑ Self-quarantine outside of school
  - ❑ Sports & activities

Email questions live to [Communications@dese.mo.gov](mailto:Communications@dese.mo.gov)



- “Why Three Feet of Social Distancing Should be Enough in Schools” (Washington Post)
- “Schoolchildren Seem Unlikely to Fuel Coronavirus Surges, Scientists Say” (New York Times)
- “We’ve Figured Out It’s Safe to Have Schools Open. Keep Them That Way.” (Washington Post)

- CDC will **likely** change guidance soon on when **asymptomatic** close contacts can be released from quarantine. This has been 14 days, but now may be:
  - ❑ 7 days with a negative test taken on day 5, 6 or 7
  - ❑ 10 days without a test
- Rationale for making this change
- Novel virus will continue to lead to rapidly changing guidance and protocols as we learn more

Email questions live to [Communications@dese.mo.gov](mailto:Communications@dese.mo.gov)

- Application window open again (11/23 – 12/2)
- Evaluating test usage before sending second shipment to existing participants
- Reminders:
  - ❑ Training verification for all test administrators
  - ❑ Electronic lab reporting within 24 hours
  - ❑ Waste disposal

Email questions live to [Communications@dese.mo.gov](mailto:Communications@dese.mo.gov)

- Educators are among second tier of “essential workforce” to receive vaccine (along with first responders, child care workers, etc.)
  - ❑ Healthcare professionals in first tier of priority
  - ❑ Availability details at [COVIDVaccine.mo.gov](https://COVIDVaccine.mo.gov)
- News from manufacturers
- Projected timeline for availability

Email questions live to [Communications@dese.mo.gov](mailto:Communications@dese.mo.gov)

- #Reach4MO  
Social Emotional  
Learning Initiative
- ESSER & GEER Revised  
Allocations



Recognizing needs

Educating schools and communities

Adapting to a “new normal”

Connecting to resources

Helping build SEL capacity

Email questions live to [Communications@dese.mo.gov](mailto:Communications@dese.mo.gov)

- Mark your calendar for our next webinar:
  - Wednesday, January 6 – 1:00-2:30 p.m.
- Will share remaining 2021 monthly webinar dates soon (Feb., March, April & May)



— Show-Me ECHO —

**COVID-19  
& KIDS  
ECHO**

**Held weekly on Thursdays  
4:00-5:00 PM**

**[Register here](#)**

**GOALS:**

- Bring together pediatric infectious disease specialists, school leaders, school nurses, LPHAs & primary care physicians to discuss COVID-19 & kids
- Share timely information about COVID-19 & kids
- Provide a platform for information sharing & learning across communities caring for children



Email live webinar questions to:  
[Communications@dese.mo.gov](mailto:Communications@dese.mo.gov)  
Updates: [dese.mo.gov/covid19](https://dese.mo.gov/covid19)